

# Tampa Bay



## Serving Families with Unique Abilities

Phyllis Guthman with Disability Resource Hub and Bright Feats are collaborating to produce a resource directory exclusively for the Tampa Bay area!

Phyllis has provided disability information, resources and communications for Special Needs Ministries, Special Needs Sports, Recreation and Art Organizations as well as Statewide and Local Disability Agencies for 18 years. She launched Disability Resource Hub as a vehicle to disseminate resources, and looks forward to sharing it as a Bright Feats Directory to the Tampa Bay area. She's committed to raising awareness that will increase capacity for individuals with disabilities their families and the organizations that provide support.



### *Disability Resource Hub*

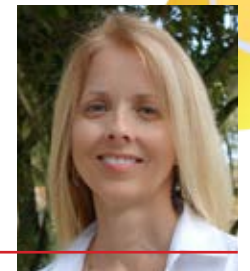
**Phyllis Guthman** has provided disability information, resources and communications for Special Needs Ministries, Special Needs Sports, Recreation and Art Organizations as well as Statewide and Local Disability Agencies for 17 years. She launched Disability Resource Hub as a vehicle to disseminate resources, and looks forward to sharing it as a Bright Feats Directory to the Tampa Bay area. She's committed to raising awareness that will increase capacity for individuals with disabilities their families and the organizations that provide support.

Contact Phyllis at [Phyllis@DisabilityResourceHub.com](mailto:Phyllis@DisabilityResourceHub.com) • 813-205-1971

### *Corporate Office / Orlando Bright Feats*

**Rori Becker**, co-founded Bright Feats in 2007. Since it's inception, Bright Feats has printed more than 1 million publications for parents with children with special needs in Central Florida. Having navigated through the complex maze of educational and medical services herself for her daughter with multiple special needs, she understands the challenges families face. It's her mission to help families find the resources they need to support their children.

Contact Rori at [Rori@BrightFeats.com](mailto:Rori@BrightFeats.com) • 407-620-9355



**Tampa Bay Consultant**  
**Disability Resource Hub**  
**Phyllis Guthman** (813) 205-1971  
[phyllis@disabilityresourcehub.com](mailto:phyllis@disabilityresourcehub.com)  
[www.BrightFeats.com/Tampa](http://www.BrightFeats.com/Tampa)

**Simple Life Connections, LLC**  
**Bright Feats Directory**  
PO Box 161602  
Altamonte Springs, FL 32716  
Rori Becker (407) 620-9355  
[www.brightfeats.com](http://www.brightfeats.com)

# Tampa Bay



## All in One Resource

### Publications

We produce a free publication featuring a directory of educational, and community providers. We look forward to providing accessible and up-to-date information to all of our families within the Tampa Bay area.

### Online

In addition to the printed publication, a mobile ready website directory and online versions of our printed publications are also available for easy access for parents on the go.

### Family Support

The Disability Resource Hub and Bright Feats are both committed to serving all families touched with individuals with special needs. We provide support for all types of disabilities and serve as an all-in-one resource for families. It's our mission to also serve families of diversity in our community that speak Spanish and other languages.

### Partnerships

We partner with Hillsborough County Public Schools to make the publications available to ESE Students. More than half of the 40,000 publications printed this year for the Tampa Bay area will be sent home in the backpacks of ESE students. We also partner with other key agencies in the community to serve as distribution sites.

### Employment

We have a unique opportunity to hire individuals with disabilities to perform the work of Bright Feats including packing and preparing the publications for delivery, data base management, graphic design, website development and social media support. This employment opportunity is made possible through collaboration with the public schools and other community providers including CARD and Vocational Rehab.

**Tampa Bay Consultant**  
**Disability Resource Hub**  
**Phyllis Guthman** (813) 205-1971  
phyllis@disabilityresourcehub.com  
www.BrightFeats.com/Tampa

**Simple Life Connections, LLC**  
**Bright Feats Directory**  
PO Box 161602  
Altamonte Springs, FL 32716  
Rori Becker (407) 620-9355  
www.brightfeats.com



# Tampa Bay



## Distribution Tampa Bay

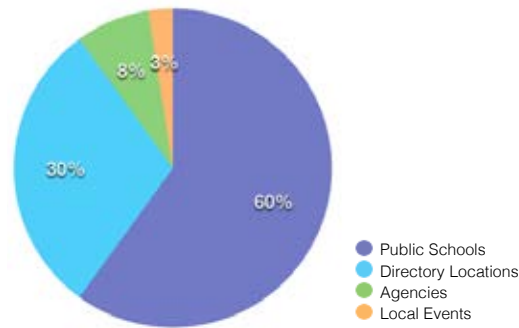
*In addition to the public schools, these locations make our publications available.*

- |   |   |                                     |  |
|---|---|-------------------------------------|--|
| ABA Academy                               | Crisis Center of Tampa Bay                | Ildewild Special Needs Ministry     | Pro Therapy Plus                       |
| ABF Behavioral Health                     | Decker Therapy Services                   | Ingram's Pro Karate                 | Quest, Inc                             |
| ACT Program (Focus Academy)               | Dr. Kinsler & Associates                  | KABS Pharmacy                       | Rice Psychology Group                  |
| All About Speech & Language               | Drug Abuse Comp Coord Office (DACCO)      | Kid Pro Therapy Services            | Sam Ivy K-9 Consultants                |
| All Children's Hospital Johns Hopkins Med | Easterseals Florida                       | Kids In Balance, Inc.               | Sensorytopia Warrior Fitness & Sensory |
| Amanda Keating and Associates             | Engage Behavioral Health, Brad Leaghty    | KLS Tae Kwon Do                     | Silver Child Development Center        |
| Amazing Kidz Therapy                      | Family Network on Disabilities            | Lawyers Autism Awareness Foundation | Smile Builders                         |
| American Youth Academy                    | FDLRS Hillsborough                        | Lifetime Smiles Dental Care         | Special Kids Academy                   |
| Bay Hope Church, Embrace Respite          | First Baptist Church of Brandon           | Live & Learn Compounding Pharmacy   | Special Olympics Florida               |
| Bell Shoals Baptist Church                | First Baptist Church of Temple Terrace    | Lowry Park Zoo                      | Splash Pals Adapted Aquatics           |
| Best Buddies - Tampa                      | Florida Autism Ctr of Excellence (FACE)   | LYF Inc. (Learning Your Function)   | St James United Methodist              |
| Beth Ingram & Associates                  | Florida Autism Center Tampa               | MacDonald Training Center           | Success 4 Kids & Families              |
| Bible Truth Ministries                    | Florida Professional Special Ed Advocates | Manning & Nurse, Attn: Tom Nurse    | Sutton Psychology Services             |
| Brandon Academy                           | Focus Academy                             | Metz Orthodontics                   | The Kid's Doctor                       |
| Bright Threads Ministries                 | Frank Sierra, DMD, PA                     | Monetfu Consulting                  | Total Therapy                          |
| Broach Tampa High School                  | Freedom Sailing Camp of Florida           | Morning Star                        | UCP of Tampa Bay                       |
| Buddy Baseball                            | Glazer Children's Museum                  | Ms. Sara's Dancing for Donations    | USF Bay Area Early Steps               |
| Center Academy                            | Gracepoint                                | Neos Massage                        | USF College of Behavioral/Comm.        |
| Center for Ed School of Arts              | Great Explorations Children's Museum      | Palma Ceia United Methodist Church  | Van Dyke (Adaptive Basketball)         |
| Champions for Children P3 Parenting       | HCPS ESE (Special Education)              | Pediatric Aquatic Therapy           | VSA                                    |
| Children's Choice for Therapy             | Hillsborough County Public Schools        | Pediatric Dentistry, Dr. Rivera     | Warriors for Autism                    |
| Children's Home Network                   | Hillsborough County Special Olympics      | Pediatric Health Choice             | We Rock The Spectrum - Tampa           |
| Courteous Canine                          | Hug Help Us Gather                        | Pepin Academies Riverview Campus    | Wholistic Pediatrics                   |

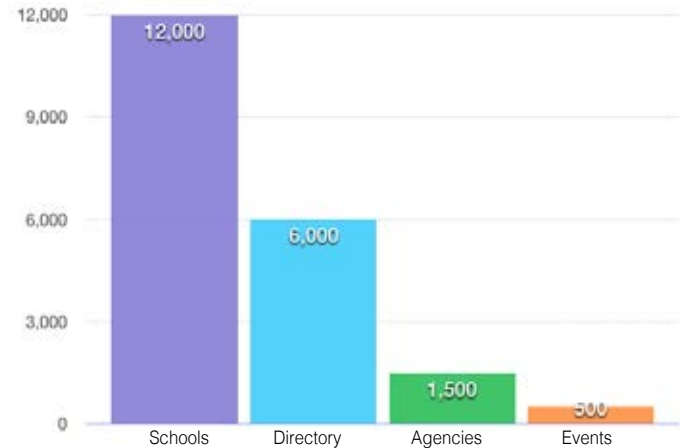
**Tampa Bay Consultant**  
**Disability Resource Hub**  
**Phyllis Guthman** (813) 205-1971  
 phyllis@disabilityresourcehub.com  
 www.BrightFeats.com/Tampa

**Simple Life Connections, LLC**  
**Bright Feats Directory**  
 PO Box 161602  
 Altamonte Springs, FL 32716  
 Rori Becker (407) 620-9355  
 www.brightfeats.com

Tampa Bay Distribution



Tampa Bay Publications  
 Number Received per Printing



# Tampa Bay



## Tampa Bay Bright Feats Publication

### Deadlines

Spring 2018 publication

Deadline: **Nov. 15, 2017**

Distribution Period: January through March 2018

Summer/Fall 2018 publication

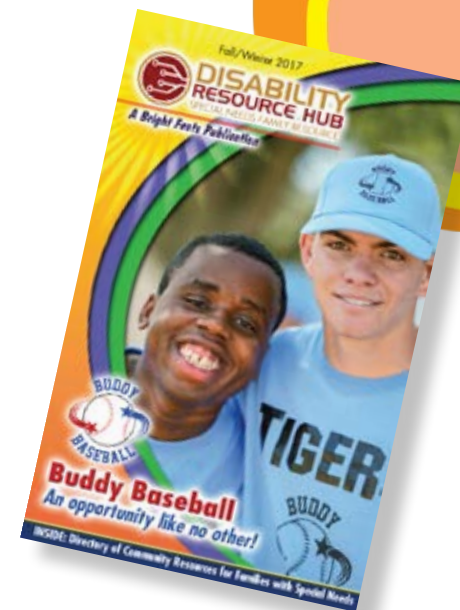
Deadline: **March 15, 2018**

Distribution Period: April through September 2018

Winter/Spring 2019 publication

Deadline: **Sept. 15, 2018**

Distribution Period: October 2018 through March 2019



### Premiums

**Cover Sponsorship**, includes Cover photo & two page article spread: \$4000

**Back Cover**: \$3000

### Print Advertising

- Full page ad - \$2500
- Half page ad - \$1700
- Quarter page ad - \$900
- Eighth page ad - \$450

### VIP Business Membership - 3 Payment Options

- Monthly - \$65
- Per Printing - \$390
- Annually - \$745

**Tampa Bay Consultant**  
**Disability Resource Hub**  
**Phyllis Guthman** (813) 205-1971  
phyllis@disabilityresourcehub.com  
www.BrightFeats.com/Tampa

**Simple Life Connections, LLC**  
**Bright Feats Directory**  
PO Box 161602  
Altamonte Springs, FL 32716  
Rori Becker (407) 620-9355  
www.brightfeats.com

Every issue includes a **Directory of Special Needs Resources for Families**

# Tampa Bay



## Bright Feats Employment Project

### Employment and Internship Opportunities

Bright Feats has many opportunities for young adults to learn important and transferable work skills. This year Seminole County Public School ESE High School Students packed and prepared our publications for bulk mail distribution and delivery to public schools and throughout the community.

### Summer 2017 Pilot Program

Bright Feats provided social media support this summer for clients with our collaboration with Seminole County Public Schools Exceptional Student Services, The Florida Institute for Community Inclusion and Kelly Green (Social Media Expert). Clients received posts for Facebook created by our team of ESE student interns.

### Opportunity for Individuals Not Served Through Traditional Programs

Our employment project helps individuals with autism and other disabilities develop their strengths through meaningful work. We break down the steps to create and schedule social media posts, input directory information in our publication graphics and website programs and manage large scale bulk mailings. Participants receive coaching and support allowing them to develop their strengths while learning new skills.

**Tampa Bay Consultant**  
**Disability Resource Hub**  
Phyllis Guthman (813) 205-1971  
phyllis@disabilityresourcehub.com  
www.BrightFeats.com/Tampa

**Simple Life Connections, LLC**  
**Bright Feats Directory**  
PO Box 161602  
Altamonte Springs, FL 32716  
Rori Becker (407) 620-9355  
www.brightfeats.com

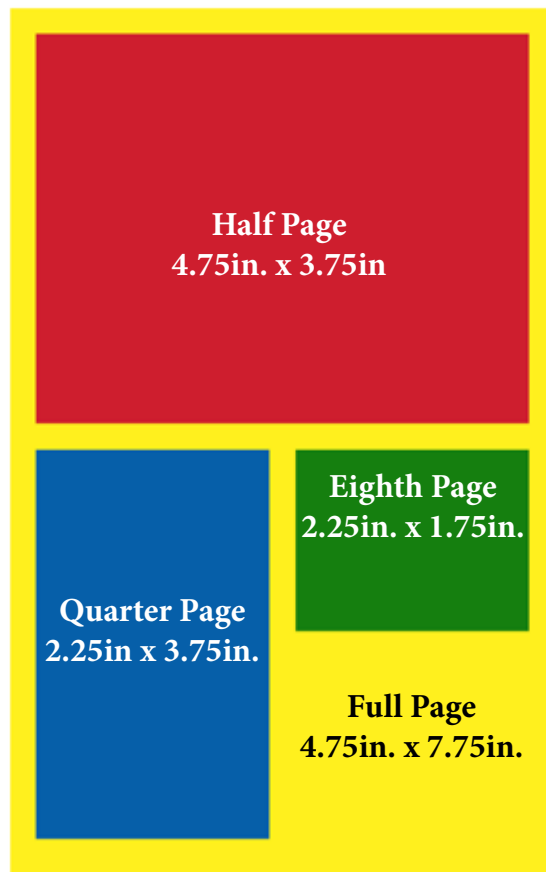




## Print Ad Sizes & Production Guidelines

### Ad Template

- Full page - 4.75in. x 7.75in.
- Half page - 4.75in. x 3.75in.
- Quarter page vertical - 2.25in. x 3.75in.
- Quarter page horizontal - 4.75in. x 1.75in.
- Eighth page 2.25in. x 1.75in.



### Submitted Ad Graphics

Preferred graphic programs include InDesign, Quark, Illustrator and Photoshop. Artwork may need to be recreated or substituted if they are not created in one of these programs for an additional fee of \$65 per hour. We can accept a pdf, jpeg, or png files. (Publisher files are not accepted.) PDF format with no color management and all fonts embedded is preferred.

Cover photo image resolution of 300 dpi or higher at 5.5 inches by 8.5 inches is required.

Please allow 1/4 inch of space on each side between live copy and ad trim. We will add a one point black line around each ad unless the ad is a full page with bleed. Bleeds are allowed on full page ads only.

The full page ad is 4.75 inches by 7.75 inches high with full bleed dimensions of 5.5 inches by 8.5 inches.

All files are CMYK at 300 dpi at full reproduction size (at 100%).

### Submitted Article Content

Articles are approximately 500 words for one full page and 1000 words in length for a two page article spread. Please include about two lines at the end for biographical and contact information about the author. We credit the author with first and last name and credentials.

**Tampa Bay Consultant**  
**Disability Resource Hub**  
**Phyllis Guthman** (813) 205-1971  
phyllis@disabilityresourcehub.com  
www.BrightFeats.com/Tampa

**Simple Life Connections, LLC**  
**Bright Feats Directory**  
PO Box 161602  
Altamonte Springs, FL 32716  
Rori Becker (407) 620-9355  
www.brightfeats.com

# Tampa Bay



## Corporate Bright Feats

*The mission of Bright Feats is to connect families with the resources they need to help their children succeed.*

### Local Representatives

Bright Feats connects with local experts who have a proven track record of influence for the areas they serve. **Phyllis Guthman** with **Disability Resource Hub** and **Jackie Yearby** with **Angels Bridging Gaps** graciously direct the presence of Bright Feats in the Tampa Bay and Space Coast Florida areas, respectively.

### Public School Partnerships

Bright Feats partners with public schools to make directory publications available for their ESE students. Guidance Counselors, Special Education Teachers, School Therapists and School Administrators use our publications to refer parents to a variety of providers.

### Community Partnerships

Providers included in our directory serve as distribution centers, directing families to resources as referrals are made. We also partner with local agencies including Early Steps, CARD, and other non-profit organizations to insure families have access to our directories.

## School District Partnerships



### Bright Feats Publications in Public Schools

SCHOOL DISTRICT	# OF COPIES PER PRINTING
Orange County Public Schools	12,500
Hillsborough County Public Schools	12,000
Brevard County Public Schools	5,000
Seminole County Public Schools	3,250
Lake County Public Schools	2,500
Osceola County Public Schools	2,500
Polk County Public Schools	2,500
Indian River Public Schools	1,000
Volusia County Public Schools	1,000
<b>Total</b>	<b>42,250</b>

**Tampa Bay Consultant**  
**Disability Resource Hub**  
**Phyllis Guthman** (813) 205-1971  
 phyllis@disabilityresourcehub.com  
 www.BrightFeats.com/Tampa

**Simple Life Connections, LLC**  
**Bright Feats Directory**  
 PO Box 161602  
 Altamonte Springs, FL 32716  
 Rori Becker (407) 620-9355  
 www.brightfeats.com