

Tampa Bay



Serving Families with Unique Abilities

Phyllis Guthman with Disability Resource Hub and Bright Feats are collaborating to produce a resource directory exclusively for the Tampa Bay area!

Phyllis has provided disability information, resources and communications for Special Needs Ministries, Special Needs Sports, Recreation and Art Organizations as well as Statewide and Local Disability Agencies for 18 years. She launched Disability Resource Hub as a vehicle to disseminate resources, and looks forward to sharing it as a Bright Feats Directory to the Tampa Bay area. She's committed to raising awareness that will increase capacity for individuals with disabilities their families and the organizations that provide support.



Disability Resource Hub

Phyllis Guthman has provided disability information, resources and communications for Special Needs Ministries, Special Needs Sports, Recreation and Art Organizations as well as Statewide and Local Disability Agencies for 17 years. She launched Disability Resource Hub as a vehicle to disseminate resources, and looks forward to sharing it as a Bright Feats Directory to the Tampa Bay area. She's committed to raising awareness that will increase capacity for individuals with disabilities their families and the organizations that provide support.

Contact Phyllis at Phyllis@DisabilityResourceHub.com • 813-205-1971

Corporate Office / Orlando Bright Feats

Rori Becker, co-founded Bright Feats in 2007. Since it's inception, Bright Feats has printed more than 1 million publications for parents with children with special needs in Central Florida. Having navigated through the complex maze of educational and medical services herself for her daughter with multiple special needs, she understands the challenges families face. It's her mission to help families find the resources they need to support their children.

Contact Rori at Rori@BrightFeats.com • 407-620-9355



Tampa Bay Consultant
Disability Resource Hub
Phyllis Guthman (813) 205-1971
phyllis@disabilityresourcehub.com
www.BrightFeats.com/Tampa

Simple Life Connections, LLC
Bright Feats Directory
PO Box 161602
Altamonte Springs, FL 32716
Rori Becker (407) 620-9355
www.brightfeats.com

Tampa Bay



All in One Resource

Publications

We produce a free publication featuring a directory of educational, and community providers. We look forward to providing accessible and up-to-date information to all of our families within the Tampa Bay area.

Online

In addition to the printed publication, a mobile ready website directory and online versions of our printed publications are also available for easy access for parents on the go.

Family Support

The Disability Resource Hub and Bright Feats are both committed to serving all families touched with individuals with special needs. We provide support for all types of disabilities and serve as an all-in-one resource for families. It's our mission to also serve families of diversity in our community that speak Spanish and other languages.

Partnerships

We partner with Hillsborough County Public Schools to make the publications available to ESE Students. More than half of the 40,000 publications printed this year for the Tampa Bay area will be sent home in the backpacks of ESE students. We also partner with other key agencies in the community to serve as distribution sites.

Employment

We have a unique opportunity to hire individuals with disabilities to perform the work of Bright Feats including packing and preparing the publications for delivery, data base management, graphic design, website development and social media support. This employment opportunity is made possible through collaboration with the public schools and other community providers including CARD and Vocational Rehab.

Tampa Bay Consultant
Disability Resource Hub
Phyllis Guthman (813) 205-1971
phyllis@disabilityresourcehub.com
www.BrightFeats.com/Tampa

Simple Life Connections, LLC
Bright Feats Directory
PO Box 161602
Altamonte Springs, FL 32716
Rori Becker (407) 620-9355
www.brightfeats.com



Tampa Bay



Distribution Tampa Bay - Sample List

Abilities of Florida
 ABC Intervention
 AFIRE
 Alliance for Citizens w/Disabilities
 All Children's Specialty Care
 All People's Life Center
 Andrew Art for Autism
 Autism Early Intervention
 Autism Society of America
 Autism Speaks
 Bay Area Early Steps
 Behavioral Consulting of Tampa
 Best Buddies
 Beth Ingram Therapy
 Bolesta Center at USF
 Broach School
 Butterfly Effects
 CARD
 Center Academy
 CHADD
 Children's Board
 Children's Choice for Therapy
 Creative Connections

Davis Island Child Dev Ctr
 Disability Achievement Center
 Down Syndrome Network
 Early Childhood Council
 Early Learning Coalition
 Easter Seals of Florida
 Engage Behavioral Health
 Esther's School
 Family Support & Resource Ctr
 FDLRS
 Florida Autism Center of Excellence
 Florida Special Care Dentistry
 Frank Sierra, DDS
 FRIENDS Down Syndrome Support
 Gulf Coast Autism Association
 It's for Kids
 Kid Pro Therapy
 Lakeside Christian School
 Lampert's Therapy Group
 Lavoy Exceptional Center
 LRC Learning Resource Center
 MacDonald Training Center
 Mark Kamleiter

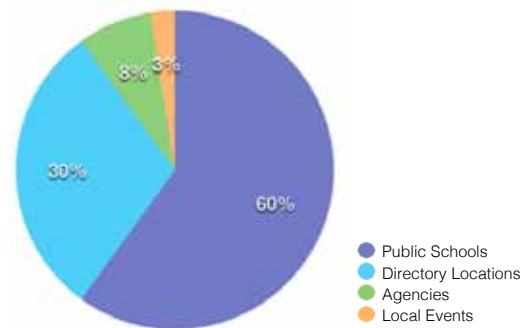
Morning Star School
 Moss Speech, Language & Reading
 Music and Movement 2 Sign
 Nathaniel's Hope Buddy Break
 Noah's Ark
 Open Arms
 Palm Harbor Montessori
 Pediatric Dental Center
 Pediatric Health Choice
 Pediatric Therapy Services
 Positive Behavior Interventions
 Pro Therapy Plus
 Pyramid Center
 Quest
 Quest Kids
 Rothman Center
 SEDNET
 Self Reliance
 Shriner's Hospital
 Silver Child Development Ctr
 Solid Rock Community School
 Special Kids Dance & Arts
 Special Olympics

St. James UMC
 St. Joseph's Advocacy Center
 Tampa Day School
 The Academies
 The Beacon Academy
 The Children's Board
 The dePaul School
 The Early Learning Coalition
 The IEP Advocate
 Thera Kids
 TLC Pediatric Dentistry
 Tridas Center
 Van Dyke Church
 VSA Arts of Florida
 UCP
 Wendy Rice, Psy.D.
 West Coast Early Steps
 West Coast Brace & Limb
 Wholistic Pediatrics
 Woodlawn Academy
 YES United

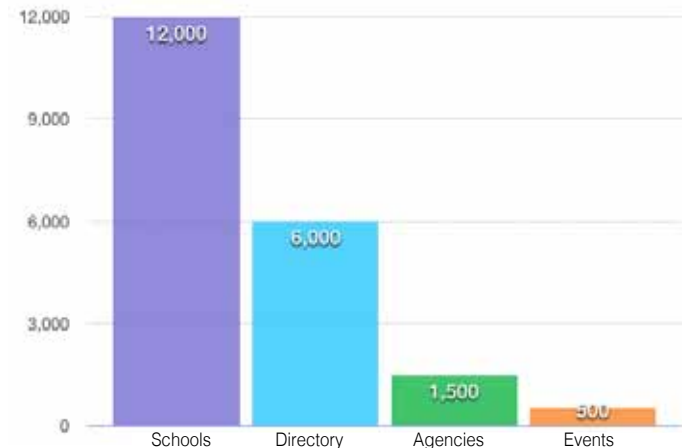
Tampa Bay Consultant
Disability Resource Hub
Phyllis Guthman (813) 205-1971
 phyllis@disabilityresourcehub.com
 www.BrightFeats.com/Tampa

Simple Life Connections, LLC
Bright Feats Directory
 PO Box 161602
 Altamonte Springs, FL 32716
 Rori Becker (407) 620-9355
 www.brightfeats.com

Tampa Bay Distribution



Tampa Bay Publications
 Number Received per Printing



Tampa Bay



Tampa Bay Bright Feats Publication

Deadlines

Fall/Winter publication

Deadline: **June 15th**

Distribution Period: July through December

Spring/Summer publication

Deadline: **November 15th**

Distribution Period: January through June

Premiums

Cover Sponsorship, includes Cover photo & two page article spread: \$4000

Back Cover: \$3000

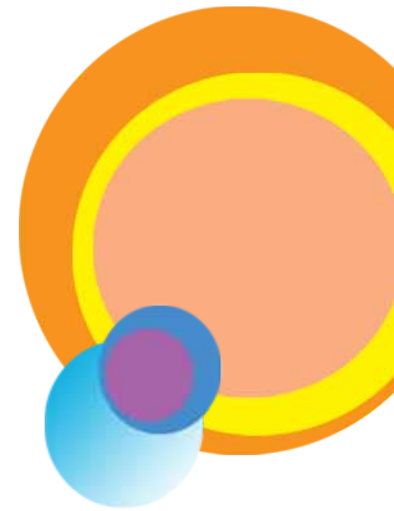
Ad Rates

- Full page ad - \$2500
- Half page ad - \$1700
- Quarter page ad - \$900
- Eighth page ad - \$450

- VIP Business Membership - \$390*
- Print Only Directory Listing - \$200**

* (Monthly, biannual or discounted annual payment options available with VIP Business Membership.)

** (Name and phone number in up to 3 categories in printed index directory. Included free with print ad purchase.)



Tampa Bay Consultant
Disability Resource Hub
Phyllis Guthman (813) 205-1971
phyllis@disabilityresourcehub.com
www.BrightFeats.com/Tampa

Simple Life Connections, LLC
Bright Feats Directory
PO Box 161602
Altamonte Springs, FL 32716
Rori Becker (407) 620-9355
www.brightfeats.com

Every issue includes a Directory of
Special Needs Resources for Families



Tampa Bay



Bright Feats Employment Project

Employment and Internship Opportunities

Bright Feats has many opportunities for young adults to learn important and transferable work skills. Currently Seminole County Public School ESE High School Students pack and prepare our publications for bulk mail distribution and delivery to public schools and throughout the community.

Summer Pilot Program

Bright Feats will provide social media support this summer for four clients with our collaboration with Seminole County Public Schools Exceptional Student Services, The Florida Institute for Community Inclusion and Kelly Green (Social Media Professional). Each client will receive an individualized social media plan and daily posts for Facebook for each month this summer including June, July and August.

Opportunity for Individuals Not Served Through Traditional Programs

We will help individuals with autism and other disabilities develop their strengths through meaningful work.

With our Summer Pilot Program a curriculum will be developed, breaking down the steps to create and schedule social media posts. This curriculum can be implemented in additional markets. We will adjust our plan through this summer experience, expanding the program to serve up to ten clients this fall.

Tampa Bay Consultant
Disability Resource Hub
Phyllis Guthman (813) 205-1971
phyllis@disabilityresourcehub.com
www.BrightFeats.com/Tampa

Simple Life Connections, LLC
Bright Feats Directory
PO Box 161602
Altamonte Springs, FL 32716
Rori Becker (407) 620-9355
www.brightfeats.com



Tampa Bay



Corporate Bright Feats

The mission of Bright Feats is to connect families with the resources they need to help their children succeed.

Local Representatives

Bright Feats connects with local experts who have a proven track record of influence for the areas they serve. **Phyllis Guthman** with **Disability Resource Hub** and **Jackie Yearby** with **Angels Bridging Gaps** graciously direct the presence of Bright Feats in the Tampa Bay and Space Coast Florida areas, respectively.

Public School Partnerships

Bright Feats partners with public schools to make directory publications available for their ESE students. Guidance Counselors, Special Education Teachers, School Therapists and School Administrators use our publications to refer parents to a variety of providers.

Community Partnerships

Providers included in our directory serve as distribution centers, directing families to resources as referrals are made. We also partner with local agencies including Early Steps, CARD, and other non-profit organizations to insure families have access to our directories.

School District Partnerships



Bright Feats Publications in Public Schools

SCHOOL DISTRICT	# OF COPIES PER PRINTING
Orange County Public Schools	12,500
Hillsborough County Public Schools	12,000
Brevard County Public Schools	5,000
Seminole County Public Schools	3,250
Lake County Public Schools	2,500
Osceola County Public Schools	2,500
Polk County Public Schools	2,500
Indian River Public Schools	1,000
Volusia County Public Schools	1,000
Total	42,250

Tampa Bay Consultant
Disability Resource Hub
Phyllis Guthman (813) 205-1971
phyllis@disabilityresourcehub.com
www.BrightFeats.com/Tampa

Simple Life Connections, LLC
Bright Feats Directory
PO Box 161602
Altamonte Springs, FL 32716
Rori Becker (407) 620-9355
www.brightfeats.com